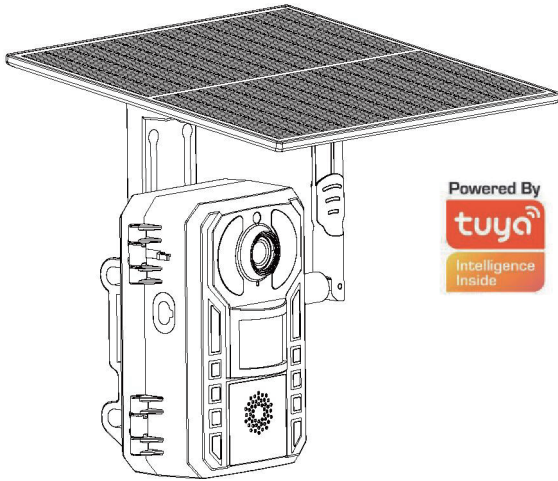


4G  
Intelligent Solar Energy  
Alert PTZ Camera  
User Manual



V2.3

**Note!**  
**The camera doesn't work without 4G network connection!**

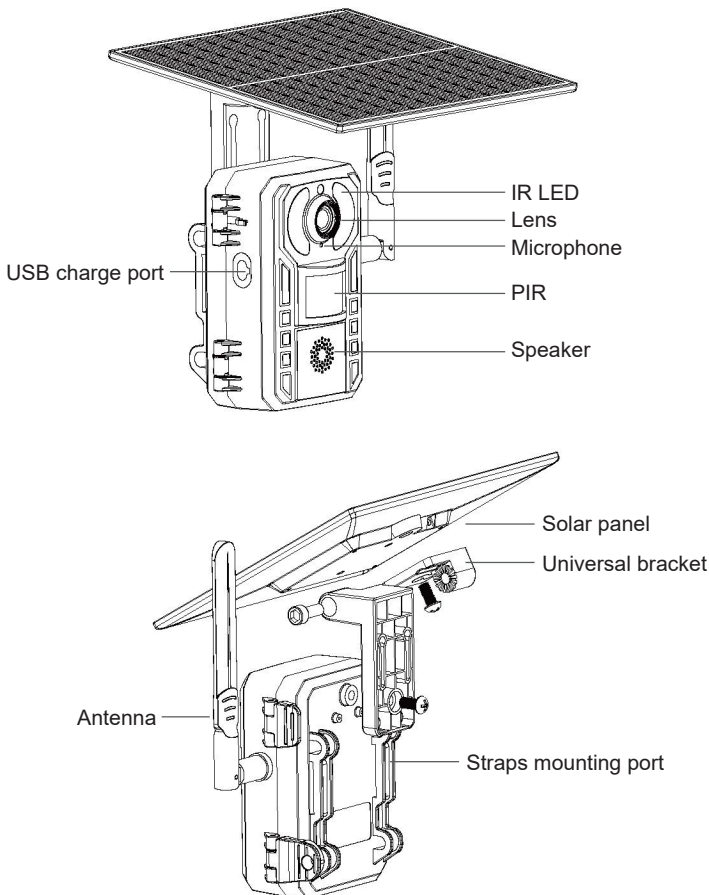
Discover forest monitoring with our new trail camera, which has a high-performance ISP and a 1/2.7" progressive sensor that captures clear images even in low light.

The camera is able to switch between light and video recording modes, and its ultra-low power consumption in standby mode enables lightning-fast wake-up in 0.2 seconds.

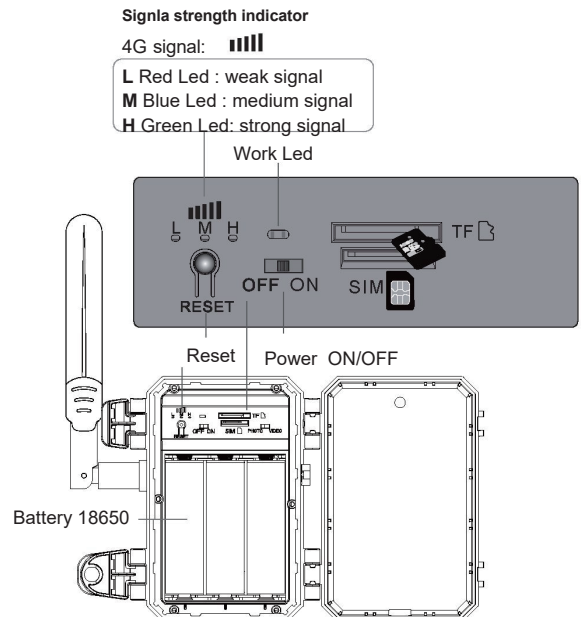
Equipped with PIR motion detection and artificial intelligence-based motion detection alarm, the camera accurately captures the movements of nature. Two-way audio, local storage options, as well as Android and iOS app support, make controlling the camera effortless.

An IP66 waterproof rating ensures durability in all weather conditions, and support for integrated or separate mounting and a quick-detachable 18650 battery compartment make this game camera a versatile tool for hunters and nature watchers. Also suitable as a surveillance camera for both homes and businesses.

Product Diagram



Product Diagram



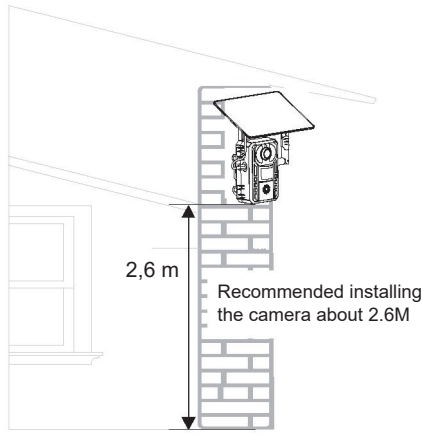
1.3 Installation Process

- 1.3.1 Solar panel: Connect panel to camera, and fix it with screws in a suitable angle.
- 1.3.2 TF card and Sim card installation: Open the silicon flap and insert the TF card and Sim card, then make sure to make sure to close the silicon flap to avoid rain leakage.
- 1.3.3 Make sure both camera power cable and panel power cable are connected.
- 1.3.4 Power on: Remove the silicon flap of panel, make sure it is power on, then put the flap back to the panel.

After inserting a memory card, the camera will record videos in addition to photos.

## 2. INSTALLATION

### Intergrated installation



## 3. APP INSTALLATION

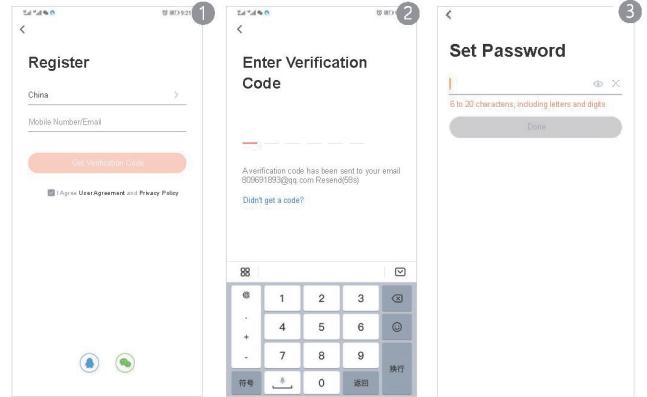
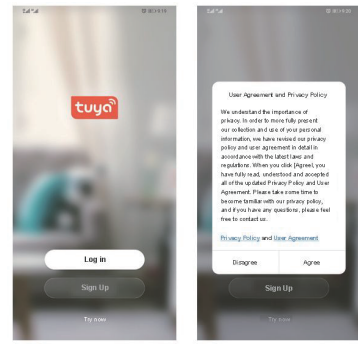
3.1 Search and download" tuya" in major applicatio markets or scan the QR code below to download the APP.



3.1.1 Once you download the APP to your smart phone, you may enter the first page which you can Login with existing account or register.

(If you are the new user of Smart Life and don't have an account, please choose register first and follow the below screenshots to complete the registration.)

-4-

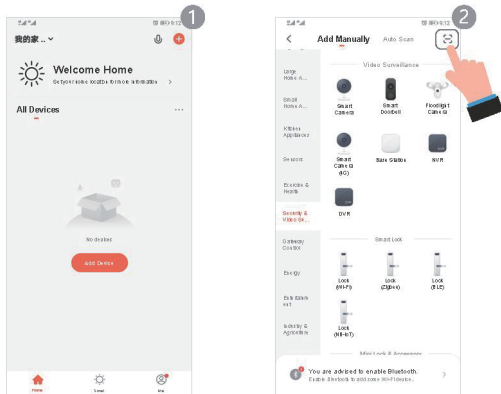


(If you have the existing account, there are two ways to login, one is with SMS verification Code, the other one is with password. In case you forget the password, you may choose login SMS verification Code or you can choose forgot password to reset it by Entering Verification Code which sent to you mobile via message.)

3.1.2 Once the account has been setup successfully, then you will automatically enter the page of "add device", kindly follow below steps to add the camera.

-5-

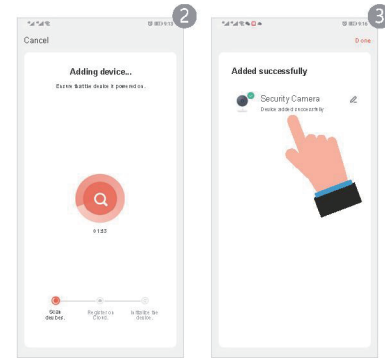
**Step 1:** Click "Add Device" or click "+" on top right on this page.



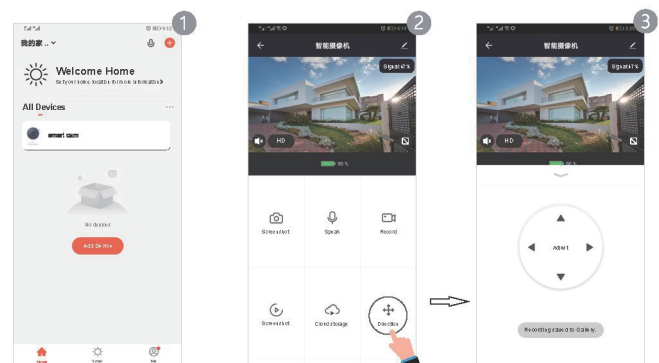
**Step 2:** Scan the QR code on the camera with your mobile phone, and after successfully pairing, it will prompt "Added successfully".



-6-



**Step 3:** If you choose "the other mode" on the top of the right side, you may find QR Code Net-pairing Which you will go back to the "Add device" page and process it again like above procedure. Or you can choose "Smart configuration" and follow the below screenshots and after that you will see the device added successfully.

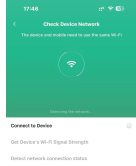


-7-

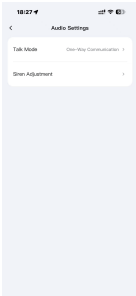
# Device Settings Page



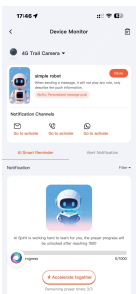
Click to see the device information



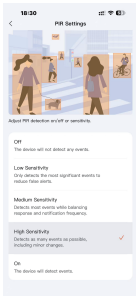
Click to check the device network



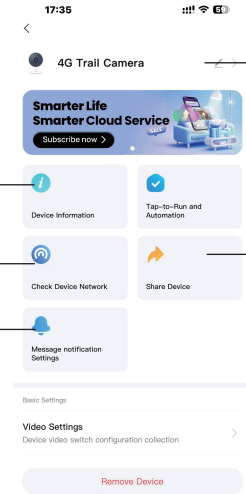
Click to check the device notification settings



Click to check the talk mode & siren volume

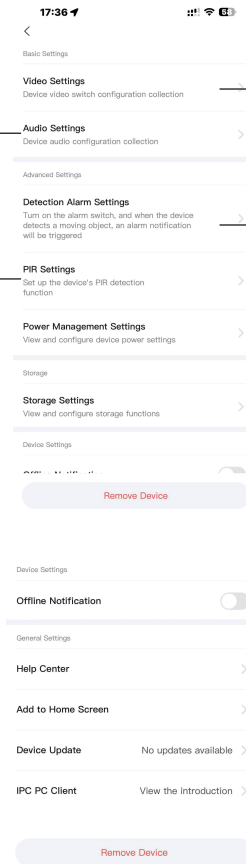
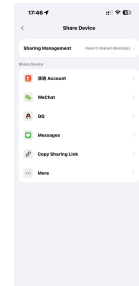


enter the PIR detection sensitivity



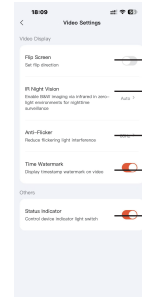
Click to change the device name

Click to share the device



Click to enter the video settings

enter the detection alarm setting



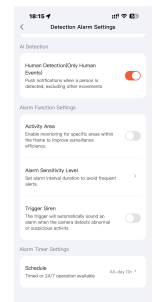
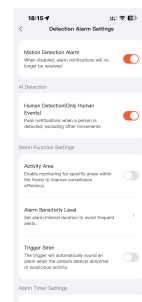
set the direction

set IR night vision on/off/auto

reduce the flickering light

time watermark on/off

indicator light on/off



## 4.FAQ:

After the configuration is done, our device will be showed on Smart Life APP which enable you to surf the smart living easily. If you have any questions about App using, you may go to category" me" to find the" Help Center" and check if you have the same issues. If not, you can report the issue and then your problems will be handled and answers will be given soon if you provide as much information as you can.

### 1.The app is unable to successfully connect to the camera.

1. Ensure that the location where you have installed the camera has a strong 4G mobilenetwork.
2. Please check if your data plan has expired.If it has,please renew your date plan promptly.
3. Check the battery level of the camera.The camera can be restarted after charging forone hour.
4. After powering on,please wait for about 1 minute until the confirmation light stay sbblue continuously.

### 2. The camera is still offline after topping up the SIM card.

After topping up.you can activate the device manually(please turn off the camera,andthen turn it back on to restart the device)or automatically(waiting for 1 hour),and thenwait for the device restore online state.

-8-

### 7. What to do if the camera does not recognize the TF Card

- (1) The camera only supports TF cards with a capacity of 8-128GB and Class 10 or higher(U1 or above).t does not support TF cards of 256GB or above.
- (2) Ensure that you insert the TF card correctly,checking that the insertion direction and position are correct.
- (3) If the TF card cannot be recognized during use,power off the camera,remove and reinsert the TF card to verify whether it can be recognized.If it still cannot be recognized,reformat the TF card or replace it.

### 8. What to do if the camera's battery life is short

- (1) Check if the solar panel is properly connected to the camera.
- (2) Ensure the solar panel is exposed to sunlight and that its surface is free fromdebris such as leaves.
- (3) Lower the sensitivity to reduce the number of alarms

### 9. What to do if the phone cannot display real-time videoswhen out of the Home

When at home,the phone can view real-time videos by connecting to WiFi.But whenout and using 4G or 5G mobile data,if the phone cannot view real-time videos fromthe camera,please check whether cellular data permission is granted to the app.

-10-

### 3. The camera goes offline suddenly.

- Step 1:Check the expiration date of your plan.You can click on the "Data Top-Up" to check the status
- Step 2:Check the cameras'electricity.Please charge the device an hour and then turn it on to check whether it is online.
- Step 3:Check the 4G network signal. If you installed it in a closed space,it is recommend-ed to test elsewhere.

### 4. Alarm notice of activity is too frequent or miss somenotices?

- (1) Adjust the sensitivity of the activity detection to meet your needs: Go to Device settings-> PIR Settings and select the appropriate detection sensitivity(High,Medium,Low) for your requirements.
- (2) Check whether other objects trigger the sensor incorrectly,such as the outdoorunit of an air conditioner,leaves,light conditions, passing cars,or pedestrians. Please adjust the mount angle of the device to reduce false alarm triggers.
- (3) Setting alarm area to reduce false alarms:Device settings-> Detection Alarm Settings,>Activity Area->Select Activity Area (Red square)

### 5. What to do if the image is blurry?

- (1) Check if there is any dirt or stains on the lens.

### 6. What to do if you can not see any video recordings?

- (1) Click on the "Playback"icon in Home page to confirm if you can see the video recordings.
- (2) Check if the SD card is installed correctly and the SD card's format(FAT32)is correctly.

-9-

## 5.Safe Battery Handling and Usage

DO NOT allow the batteries or battery compartment to get wet prior to or during installation while your Wire-Free camera is weatherproof and safe to use outside.

-11-

## Technical information

Resolution: 2MP  
Operating system: Linux + RTOS  
Main processor: Ingenic-T31ZL  
Image sensor: GC2009  
Video pixels: 2560 x 1440/15fps, 640 x 360/15fps  
Application operating system: Android, iOS  
Video compression format: H.265  
Audio compression format: AAC and G.726  
4G: TD-LTE, TD-LTE / LTE FDD TD-LTE / LTE-FDD  
4G version: CN/ AU/ EU/ JP/ US/ ASEAN (Optional)  
SIM-card: Nano SIM  
Detection mode: PIR human detection + AI human form detection  
Detection mode: 0-12M  
Detection angle: 95°  
Alarm mode: Real-time call or push message  
Infrared light: 940nm  
Night vision distance: 25M  
Built-in speaker: 3W  
Built-in microphone: voice monitoring distance 20M  
Lens: 3.6mm  
Lens angle: 85°  
Local storage: TF card Max 128G  
Power supply mode: Solar panel + Built-in batteries  
Solar panel material: monocrystalline silicon  
Solar power: 6W  
Battery: 3kpl 18650  
Operating current consumption: 2.5W  
Standby consumption: 0.003W  
Operating environment: Indoor/outdoor  
Operating temperature: -30°~+60°  
Air humidity: 0%~90%RH  
Net weight: 1KG

-12-

## Warranty

Product warranty is valid for 1 year from the date of purchase. The warranty is void if the product is used for purposes other than its original purpose or is used for commercial / professional or rental purposes.

The warranty does not cover damage caused by natural conditions or damage due to improper storage. For warranty, contact your dealer.

Blue Import BIM Oy  
Hampuntie 12-14, 36220 Kangasala, Finland

-14-

## EU Declaration of Conformity

This equipment has been designed and manufactured and sold in compliance with the requirements of the Low Voltage Directive and the RoHS Directive. Therefore, the product is CE marked and has a CE Declaration of Conformity which is available to the authorities.

Blue Import BIM Oy declares that type of radio equipment 000R7068-12445 is in compliance with the RED directive 2014/53/EU. Full text of the EU Declaration of Conformity is available at the following internet address: [www.blueimport.fi/tiedostot](http://www.blueimport.fi/tiedostot)

## Disposal of equipment and batteries

After the implementation of the European Directive 2002/96/EU in the national legal system, the following applies:

Electrical and electronic devices may not be disposed of with domestic waste. Consumers are obliged by law to return electrical and electronic devices at the end of their service lives to the public collecting points set up for this purpose or point of sale. Details to this are defined by the national law of the respective country.



This symbol on the product, the instruction manual or the package indicates that a product is subject to these regulations.

By recycling, reusing the materials or other forms of utilising old devices, you are making an important contribution to protecting our environment

-13-